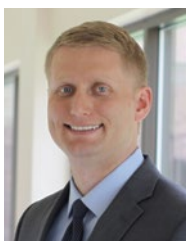


"Classic Cars Steal the Show at Mount View Care Center"

NEWS YOU CAN USE



WEEKLY CONNECTION WITH MICHAEL LOY

Birth to 3 Services

In 1991, the State of Wisconsin implemented a statewide Birth to 3 Program by delegating the responsibility to provide these services to the counties. The County Boards we represent designated North Central Health Care as the agency to provide services of the Birth to 3 Program. The work of Birth to 3 is not only required, but essential to the health and well-being of our community. Research shows that work done in early childhood has positive impacts on the overall health of the individual in adulthood, especially in children with disabilities. Birth to 3 has brought countless families vital assistance and skill development for many years as a program operated by North Central Health Care.

Last year, we announced that NCHC was looking at whether or not we should continue to be the designated agency to provide Birth to 3 Services. We considered Birth to 3 as it fits within our service line structure and scope, whether it fits as an on-campus program and whether we can provide the expertise or guidance needed for the program to flourish going forward. As we examined the truly remarkable work of our Birth to 3 program and staff, we saw that a new partner, specifically Marathon County Special Education could take the program further. Marathon County Special Education is an agency that has been around for a long time and brings a wealth of knowledge, staff support, and training opportunities that will benefit the staff and families of Birth to 3. After a systematic evaluation and planning process and a lot of team work between agencies, the NCHC Birth to 3 program is in the process of officially being transferred to Marathon County Special Education. Staff are now actively moving to their newly renovated space in the Lake View Professional Plaza building and the initial transfer of responsibilities will be effective July 1, 2019. The entire transition still requires final County approval, and will likely take up to 18 months as we want to maintain continuity of the high quality services the program provides.

We are happy to report that the important work of Birth to 3 will continue across the region unchanged within the Marathon County Special Education as all the staff, policies, programs and services will follow them into their new space. The program is literally being picked up out of NCHC as is and being set down as part of Marathon County Special Education. Patients in all three counties should have no discernible change in care and there will be no disruption of services to families. NCHC staff, families and partners will notice that a change of logo on Birth to 3 materials will occur as of January 1, 2020, but should experience no other change. This transition will ensure that Birth to 3 has opportunities and benefits far beyond what NCHC can currently provide, and will set them up for even more success in the future. We are excited to watch the program continue to make an incredible, positive, difference for our families and communities.

While change can be unsettling, we at North Central Health want to ensure that our core services and programs reflect the needs of our community, but that they also align with our mission and strategic direction. We must focus on our core programs and be excellent in them. Deciding that a program might have a better alignment with another agency is not a bad thing if the goal is to do the best thing for the community we serve. I firmly believe we

are doing the best thing for all parties involved. Birds fly from the nest, but they will always have a special place in our heart, and in this case we will do everything to give them a chance to fly even higher.

As we go into the final stretches of the transfer, I want to thank our current and former Birth to 3 staff for their commitment to the organization, the kiddos they've served, the families they've impacted and for making the community a better place. You will always be a special part of the NCHC family and our history.

We will continue to provide updates as they become available.

Make it a great day,

Classic Car Show 2

Great Work MVCC Team!

Thank You for Donating! .. 3

United Way Book Collection for Ready to Read Program

Fibromyalgia Support Group 4

Next Meeting June 11

Community Treatment IPS Team Receives Award 5

Bee Stings - Ouch! 7

Tips for Care



Person-Centered
Shout

out

David Schroeder, Transportation

Why: For helping with the Lincoln/Langlade vehicles and maintenance issues!

Submitted By:
Haley Ellenbecker



ADMINISTRATOR ON-CALL x4488 or 715.848.4488

In the event of Phone System Outage, reference the O:drive "On-Call Information Folder" for Schedule and Cell Phone #'s.

**Tuesday, June 3 –
Sunday, June 16**

**Brenda
Glodowski**





PHOTO OF THE WEEK



Submit A Great Photo From Your Week!

Submit your photo and description to: Email: jmeadows@norcen.org or Text: 715.370.1547. Please indicate Photo of the Week and include your name, who/what/where of the photo and why you are submitting.

Classic Cars Steal the Show at Mount View Care Center

This week the Mount View Care Center Activities Team organized a Classic Car Show and Ice Cream Sundae Sale. Not only did this annual event bring in new vehicles to the Wausau Campus, the Sundae Sale raised funds for the Walk to End Alzheimer's. Residents and employees alike enjoyed viewing twenty one classics from their past. Stories were told and a good time was had by all who attended. Great work Mount View Care Center Team!





NCHC RETIREMENT NEWS: Congratulations to Kevin Long!

After 10 years of service, NCHC celebrated the retirement of Kevin Long from Mount View Care Center. Kevin was a Certified Nursing Assistant but also worked in the Crisis CBRF, was a homemaker. We were joined by Kevin's wife, Louis, at the celebration. Enjoy your retirement Kevin!



406 BOOKS COLLECTED TO DONATE TO UNITED WAY READY TO READ PROGRAM!

Thank you for your support!

Kids books were donated in boxes all around our NCHC locations. It left the NCHC United Way committee cleaning, sorting and stickered 406 books. Ready to Read is a United Way project to encourage and increase reading to and with babies and young children. A family visiting an immunization clinic, for example, would receive a free book, and even more importantly, information on the benefits of reading to their baby or young child daily. These books will be distributed to local schools and organizations so that children get the opportunity to take a book home. Thank you to all the employees, visitors, clients and patients who donated books for the collection. Your generosity and kindness will surely give a children a book in their hand and a smile on their face. Thank you!



All books were wiped down, cleaned and stickered with a United Way Ready to Read logo.



CHANGES TO CRISIS CENTER ENTRANCE AT THE WHITE FLAG

**MVCC Visitors Will No Longer
Be Allowed Entry Through
Crisis Center Doors**

As you know, the North Central Health Care Wausau Campus shares space with a variety of health care programs in addition to Mount View Care Center skilled nursing. As we seek to continually improve our safety and security on the Wausau Campus, a letter is being sent to inform all Legacies by the Lake residents and families of some changes that have taken affect regarding visitor entrances on the Wausau Campus for Legacies by the Lake programs.

Our Crisis Center and Emergency entrance and parking areas can become quite busy at times, and to ensure that our emergency services are operating at optimum levels, non-emergency parking and visitors through the Crisis Center, all non-emergency visitors will need to use a different entrance.

**All visitors to Legacies by the Lake
Dementia Care programs (Gardenside Cross-
ing, Lakeview Heights and Evergreen Place)
will no longer be able to access the neigh-
borhoods using the Crisis Center parking
area (white flag, door #55).**

To visit these neighborhoods, visitors may park in the main MVCC parking lot (purple flag) and use the main entrance doors or you may park in the large rear parking lot area near Gardenside and enter in a side door near the Cafeteria (doors marked #47 or #48).

Signs are being installed to assist with these changes at the parking lot areas in the rear of the building.

We need the help of all NCHC employees to assist visitors with this change. If you have questions, please feel free to call or email Kim Gochanour. Thank you for your help!



FIBROMYALGIA SUPPORT GROUP MEETING

Next Meeting: Tuesday, June 11th • 6 – 8 pm

A local Fibromyalgia Support Group meets monthly on the 2nd Tuesday of each month at the Marathon County Public Library, Wausau Branch, from 6-8 pm in the 2nd floor meeting room. They have over 150 Fibromyalgia contacts from Merrill to Plover and have been holding meetings in Wausau for at least 30 years.

As Chair of the group for the past 4 years, Donna Krause, B.S. Ed., MBA plans the monthly topics and speakers, meeting sponsors, send out monthly email newsletters and create the meeting flyers which are posted locally. **Donna would like to invite all NCHC and MVCC employees such as caregivers, health assistants, physicians, crisis workers, addiction counselors, psychiatrists, etc. to attend any of the meetings.**

Fibromyalgia is a syndrome involving chronic, centralized pain sensitivity. The most prevalent symptoms of fibromyalgia are:

- 1.) chronic pain which can be constant or intermittent,
- 2.) low mood, anxiety or depression,
- 3.) brain fog, forgetfulness and difficulty focusing,
- 4.) fatigue, lethargy and low energy,
- 5.) difficulty sleeping and inability to go into stage 4 sleep, the regenerative sleep cycle.

The recent issue of "Pain-Free Living" quotes Dr. Arya Mohabbat, MD, practice chair of the Fibromyalgia and Chronic Fatigue Clinic at Mayo Clinic in Rochester, Minnesota that "Fibromyalgia, a common condition, affects about 8% of the U.S. population. One out of every 12 people that you see every day has fibromyalgia" It can run in families and can also be caused by trauma. Also many veterans, they are now finding out, have fibromyalgia caused by war trauma.

"We always have professional community speakers on topics related to health care and health issues. This month, on Tuesday June 11th at 6 pm, at the Marathon County Public Library Wausau Branch, 2nd floor meeting room, we will have UW Extension Horticulture Educator Brianna Wright presenting on "Historical Therapeutic and Healing Gardens". After her color slide presentation covering historical and present day therapeutic, healing meditation, etc. gardens, there will be time for discussion and questions and answers. I will also give out information on events such as tours, yoga, walks, etc. at the Monk Gardens, the Leigh Woodson Art Museum's Botanical Gardens exhibit, their 5 Koshas Yoga in the Sculpture Gardens, and the Healing Nature Trail in Three Lakes, WI." – Donna Krause, B.S. Ed., MBA

Meetings are open to the public. You do not have to be diagnosed with fibromyalgia to attend any of the monthly speaker meetings. This group provides important information on fibromyalgia for those who are finding it difficult to know what's affecting them physically, mentally and emotionally, as presently there's no test to determine the absolute presence of fibromyalgia in a person's body. Scientists are just a few years away from blood tests to confirm the presence of fibromyalgia.

Thank you for your time and interest in this awful condition and empathy for those who are suffering with fibromyalgia knowing the pain, confusion and frustration many women can feel not having the knowledge about fibromyalgia symptoms and also not being able to have a sure scientific diagnosis or cure available to them. Donna can be reached by email, phone or text for any questions and would be pleased to hear from you.

Submitted by:

Donna Krause, B.S. Ed., MBA, Fibromyalgia Support Group Chair
Marathon County Board Supervisor, Health and Human Services Committee
715-302-3851, dkjustintime@gmail.com

ARE YOU A "TOUGH MUDDER?"

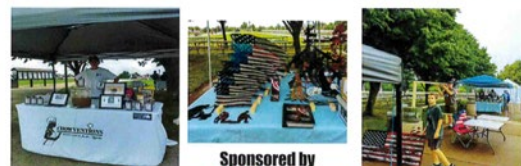
Have you heard of the Tough Mudder Races? Interested in participating? Jessica Serfontine, Financial Services Benefit Counselor at NCHC, would like you to join her team for the upcoming July 13 & 14 race in the Twin Cities! If there are enough people interested, there is a team discount! Details found at www.toughmudder.com

Contact Jessica at
JSerfontein@norcen.org
or 715.848.4383

*This event is not sponsored or associated with NCHC and participation is at your own discretion and risk.



Veterans Art & Business Expo & Exhibit



Sponsored by

The Highground Veterans Memorial Park

W7031 Ridge Rd. Neillsville, WI

Saturday, June 15, 2019

10 AM - 4 PM

Veteran Artists and Crafters will display and sell a variety of products including: Book signings, Wood crafts, Glass art, wooden flags, metal art, Center, Small Business Admin., CC Young Professionals, Veterans Business Admin.

We are still looking for more Veterans to join us.

What will you bring?



Other Events That Day include
Flag Day & MWD Stone Ceremony @ 10AM
Legacy Stone Ceremony @ 1PM,

for more info or to register
Call 715-743-4224 or
learningcenter@thehighground.us

The Highground
Veterans Memorial Park
<http://www.thehighground.us>





NCHC COMMUNITY TREATMENT IPS TEAM RECEIVES EXEMPLARY FIDELITY AWARD AT STATE CONFERENCE

IPS Team Helps Those with Persistent Mental Illness Find and Secure Employment and Education

On May 30 and 31st, the Community Treatment Individual Placement & Support Team (IPS) Team attended the WI Annual IPS Learning Collaborative and were presented with an award for reaching "Exemplary Fidelity" during their recent Fidelity Review performed by the WI IPS State Team. This means that the CT IPS team provides the highest quality of services recognized by the International IPS Learning Community, who researched and developed this practice.

IPS (Individual Placement and Support) is an evidence-based practice that supports individuals with severe and persistent mental illness with finding and securing employment and/or career based education.

"Working helps further recovery more than any other single thing – more than therapy, case management or medication alone." – Dartmouth Psychiatric Research Center

Shown in photo (above):

Bob Meyer, WI IPS State Trainer

Christian Halbach, IPS Employment Specialist, Marathon

Nanette Griese, IPS Employment Specialist, Langlade

Mandy Schmidt, IPS Employment Specialist, Marathon/Lincoln

Kristin Verhulst, IPS Employment Specialist, Marathon

Ted Beres, IPS Employment Specialist, Marathon

Chrissy Seidler, IPS Employment Supervisor

Krissy Neyrinck, Division of Vocational Rehabilitation Counselor/IPS Partner

Laleña Lampe, Department of Health Services/WI IPS State Team

Kathleen Enders, Division of Vocational Rehabilitation/WI IPS State Team

Stephanie Jewell, IPS Employment Specialist, Lincoln



KIDS IN CRISIS NCHC Joins the Conversation

North Central Health Care joined our community partners at the Marathon County Public Library in Wausau this week for the screening of "You're Not Alone," a documentary about youth mental health presented by Milwaukee PBS and USA TODAY NETWORK-Wisconsin. This was followed with a conversation with community members and about 65 attendees. Watch the video at: <https://www.facebook.com/wausaudailyherald/videos/285023198932786/>



Wear Your Fav Sports Team Apparel Monthly!
Pay \$3 Per Month and You Can Wear Sports Apparel **Every 2nd Wednesday of the Month** Through December!
Pay in Advance or Monthly!



Jeans/Sports Wear Day

Coming June 12 AND Every 2nd Wednesday of the Month Until December

\$3 Donation to Wear Your Favorite Sports Team Apparel*

Pay & Pick Up A **Casual for United Way Sticker** from Any United Way Member or at these Locations: Volunteer Services, MVCC Information Station, Cafeteria, Front Welcome Desk, Cashier's Office, Merrill & Antigo Centers

**Sports Apparel must adhere to NCHC Dress Code Policy. No hoodies or sleeveless shirts please.*

All Proceeds Benefit Our Local United Way



Anti-Human Trafficking Awareness Program
& Hotel/Motel/Gas Station Outreach

Saturday, June 15, 2019
Awareness program and Volunteer Outreach

Location: Covenant Community Presbyterian Church (CCPC)
1806 Weston Ave., Schofield WI 54476

Program and Schedule:

8:30, Registration and coffee

9:00-11:15, Awareness, prevention, and training program about Human Trafficking

Lunch: at CCPC

12:00-2:00, Distribution of Anti-Human Trafficking materials and a missing children's poster to local businesses

Attend the Morning Program: Human Trafficking happens in WI, Marathon County, and in our community. What should you know to help keep you, your family, and community safe? How are our children at risk because of social media? How are victims recruited and groomed? What can you do to help combat this crime? What are the Red Flags that you should recognize and how should you report a suspected incident?

Presenters: Lisa Sennholz and Terra Koslowski from Damascus Road, an anti-trafficking organization that raises awareness and helps trafficked victims. Brenda Bayer, presenter and advocate for trafficked victims, from The Women's Community. Sarah D'Acquisto from the Wausau Police Dept., Tracy Fremming RN, and other professionals from the community that work with trafficked victims.

Volunteer to distribute materials for the Afternoon outreach: Volunteers, in groups, distribute Anti-Human Trafficking awareness materials and a missing children's poster to local businesses. The businesses will have been contacted and are expecting these materials. The businesses include: hotels, motels, and gas stations in the area. The morning programing will prepare you to make this short stop.

Please register. Volunteers needed. Ask what you can do to help.

Covenant Community Presbyterian at 715-359-6467

Questions and register, Ruth Wrynski at 715-842-8410

Intended Audience: This outreach program is intended for all adults from the community; individuals, parents, church members and leaders, business leaders, teachers, and counselors who want to help make our community a safer place. We are the eyes and ears and heart of our community and our awareness of the terrible crime of Human Trafficking can make a difference in someone's life.

NEWS YOU CAN USE

EMPLOYEE UPDATES BEGIN JUNE 17

All employees should make arrangements to attend one of the following sessions.

2019 – 2ND QUARTER EMPLOYEE UPDATES

MON, JUNE 17 WAUSAU CAMPUS
10:00 am MVCC 2nd Flr.
Dining Room*
3:30 pm Theater

Moved to 2nd Floor.

MERRILL CENTER
12:00 pm*

Changed date.

TUES, JUNE 18 WAUSAU CAMPUS
2:30 pm Theater*

Changed date.

WED, JUNE 19 9:00 pm MVCC 1st Flr.
Dining Room

TUES, JUNE 25 ANTIGO CENTER
3:30 pm

WED, JUNE 26 WAUSAU CAMPUS
6:15 am Theater
12:00 pm Noon Theater

Please Register in HealthStream!

* Change to original time, date or location.



Click [here](#) for this week's Crime of the Week.

<http://marathoncounty.crimestopper-web.com/crimeoftheweek.aspx>



NEWS, UPDATES, LINKS, STORIES, PHOTOS, VIDEOS!

GET SOCIAL!
#IamNCHC



tidbits on benefits

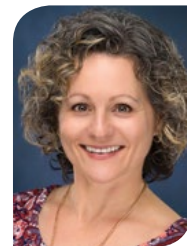
WELLNESS CORNER

By Sherry Gatewood, PA

Bee Stings – Ouch!

I have seen a lot of bee stings for treatment in the clinic due to large local reactions. Here is a reminder for first aid tips:

- When a bee stings, it may leave the stinger in the skin, quickly flick the stinger away to lessen the amount of venom released into the skin. Wasps do not leave a stinger.
- A typical local reaction to a sting is redness and an area of painful swelling up to 2.5 inches at the site of the sting that develops within minutes and resolves within a few hours. Occasionally, swelling may last one to two days. Uncomplicated local reactions may be treated with cold compresses.
- If the redness from the sting extends to cover a larger area over 1-2 days, a dose of steroids may be required to get the reaction under control.
- There is always a potential for secondary infection to any break in the skin. If redness and swelling become dramatically worse over 3-5 days, antibiotic may be needed.
- If there are any symptoms of swelling of the face and lips, feeling like the throat is swelling, wheezing, or difficulty breathing, call 911 for an ambulance.
- If there is a history of severe allergy to bee/wasp stings, called anaphylaxis, please be sure to get the prescription Epi-Pen. If one is available, check the expiration date and carry it at all times that there is a risk for a bee sting.
- If there is a bee sting on a finger wearing a ring, remove the ring right away. There is a possibility for finger swelling to the point that the ring may not be able to be removed. The ring may need to be cut off. This is also true of any hand injury, if there is finger swelling, take rings off right away.



Sherry Gatewood



Wisconsin Deferred Compensation (WDC) Program Offered By Your Employer, North Central Health Care



The Wisconsin Deferred Compensation (WDC) Program is a powerful tool to help you reach your retirement goals. Join a WDC Retirement Plan Advisor at an upcoming meeting.

If You're Just Starting to Save ... and need to enroll, go to www.wdc457.org and click REGISTER or enroll now [here](#). Use the Plan Number **98971-01** and the Plan Enrollment Code **VxxJ6vuE** expiration date 6/1/2019.

If You've Been Saving for a While ... you may want to review your income projections, savings rate and investment strategy. For a portfolio review, meet with your local Retirement Plan Advisor or call **(877) 457-9327**.

If Retirement Is Just Around the Corner ... we are here to assist you in making a smooth transition to retirement. Remember, when you stay informed and engaged, you can make your WDC account a more powerful retirement planning tool. Watch for pre-retirement group meetings near you!

Changing your payroll contribution or updating your beneficiary is easy!

Log in at www.wdc457.org or call the WDC Service Center at **(877) 457-9327**. Do you have questions about Wisconsin Retirement System (pension)? Please call WRS directly at **(877) 533-5020**.

Meet with your WDC Advisor

Have an appointment and want a retirement strategy designed just for you? The more information you share with us, the more personalized your experience can be. Please bring the following to your appointment:

- ✓ Current Wisconsin Retirement System (WRS) statement
- ✓ Social Security statement
- ✓ Other retirement account statements
- ✓ Current paycheck stub
- ✓ WDC username, password and PIN (if known)

Please bring all of the above information for your spouse/ partner (if applicable).

If You Need an Appointment ... schedule a consultation with a Retirement Plan Advisor or register for a group meeting by going to www.wdc457.org and click on the *Schedule a Meeting* tile.

EMPLOYEE HEALTH & WELLNESS CENTER

1100 Lakeview Drive, Wausau, WI
North Central Health Care Campus
Door 25

Schedule an Appointment:
715.843.1256 or MyAspirus.org

Clinic Hours

Monday - Wednesday - Friday: 8:00 am - 4:30 pm
Tuesday: 6:30 am - 3:00 pm
Thursday: 10:00 am - 6:30 pm

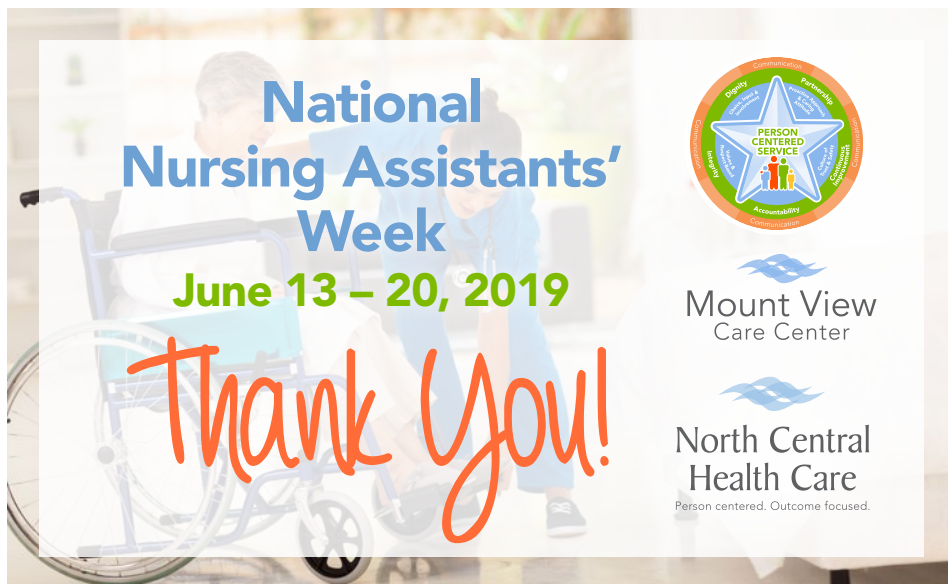


WDC Program Meeting Schedule

Wednesday, June 12 th	11:00am-1:30pm	Account Review Sessions	NCHC Campus-Badger Room
Go to www.wdc457.org to schedule your appointment.			

Securities offered or distributed through GWFS Equities, Inc., Member FINRA/SIPC and a subsidiary of Great-West Life & Annuity Insurance Company. GWFS Equities, Inc. registered representatives may also be investment adviser representatives of GWFS affiliate, Advised Assets Group, LLC. Representatives do not offer or provide investment, fiduciary, financial, legal or tax advice or act in a fiduciary capacity for any client unless explicitly described in writing. Retirement products and services provided by Great-West Life & Annuity Insurance Company, Corporate Headquarters: Greenwood Village, CO; Great-West Life & Annuity Insurance Company of New York, Home Office: New York, NY, and their subsidiaries and affiliates, including registered investment advisers Advised Assets Group, LLC and Great-West Capital Management, LLC. 98971-01-PDF-6003-1707 AMS05068-0618





Now as never before, attention is being directed to care of our elder and disabled citizens and greater attention also is directed to the workers who provide hands-on-care and caring. The 42nd annual National Nursing Assistants' Week provides a timely opportunity to foster and showcase the wonderful things that can happen for residents and workers in the nursing field. During this week we honor and thank

**CNA's • Direct Care Workers • Care Assistants • Home Care Assistants
Personal Care Workers • PTAs • Geriatric Aide/Assistants
Resident Assistants • Restorative Aides**

These great employees work at nursing homes, home care, hospice, hospitals, correctional institutions, schools and other long term care settings, but we especially would like to thank our amazing employees here at NCHC! Watch for fun activities that are planned in departments across the organization to honor and thank these employees!



**Refer and earn a \$500
Referral BONUS!!**



NEW Position Posting

Title: Compliance Auditor

Status: Full Time

Location: Administration,
Wausau Campus

<http://bit.ly/CompAuditor>

The Compliance Auditor supports the Quality and Clinical Transformation Director with the facilitation and administration of compliance and auditing activities related to the operation of the compliance program. Performs audits, reviews, research, tracks and analyzes compliance activities.

Education and Experience

Requirement: Associate degree in healthcare administration, health information management, or related field.

NEW Position Posting

Title: Youth Crisis Services Director

Status: Full Time

Location: BHS & Crisis, Wausau Campus

<http://bit.ly/YouthCrisisDir>

The Youth Crisis Services Director is responsible for daily operations; staff recruitment and supervision, fiscal management; marketing oversight; clinical programming; strategic planning; regulatory compliance and survey readiness; physician/community partner relations and patient/client satisfaction.

Education and Experience

Requirement: Master's degree in Healthcare Administration or related specialty of Healthcare with a minimum of 5 years of healthcare or social services management experience.



**NEWS, UPDATES, LINKS,
STORIES, PHOTOS,
VIDEOS!**

GET SOCIAL!
#IamNCHC



IMPORTANT: NOTIFICATION OF VOLUNTARY BENEFITS CARRIER CHANGE

After a thorough review process of voluntary benefit providers, North Central Health Care has selected Standard Insurance Company (The Standard) as our new carrier for the Voluntary Short Term Disability (STD), Accident and Critical Illness Insurances. This change will take effect on July 1, 2019.

IMPORTANT: All benefit eligible employees will automatically be enrolled in the new short-term disability plan and premiums for this plan will be deducted from pay checks starting in July 2019.

If you wish not to be enrolled in the new plan you are required to log into The Standard Insurance enrollment portal during the open enrollment period listed above to waive the coverage.

There will be an open enrollment period for the voluntary benefits beginning June 3, 2019 continuing through June 14, 2019. Please plan on attending a meeting to learn about the new provider and the voluntary benefits being offered.

All benefit eligible employees will be receiving a mailing at their home address with additional information regarding the new voluntary short-term disability plan.

The link to The Standard's Ready Enroll enrollment portal can be accessed via the internet at <https://standard.benselect.com/NCHC> or at North Central Health Care's public website at www.norcen.org/careers/employee-benefits/ or via the NCHC intranet under the Employee Benefits link. <http://intranet/NCHC/Departments/HumanResources/BenefitInformation.aspx>. The enrollment portal will open on Monday, June 3rd.

Voluntary Benefits Open Enrollment Meetings

Below are the Voluntary Benefits Open Enrollment meeting times and locations:

Location	Date	Time
Merrill Office	Monday, June 3, 2019	9:00 - 10:00 am 10:00-11:00 am
Antigo Office.....	Monday, June 3, 2019	2:00-3:00 pm 3:00-4:00 pm
Wausau Campus Theater.....	Friday, June 7, 2019 Monday, June 10, 2019	12:30-1:30 pm 12:00-1:00 pm 1:30-2:30 pm
	Tuesday, June 11, 2019	9:00-10:00 am 11:30-12:30 pm
MVCC 1st Floor Dining Rm...	Friday, June 7	2:00-3:00 pm

WebEx Presentations

There will also be two WebEx Presentations:

Thursday, June 6, 2019 8:30-9:30 am
Tuesday, June 11, 2019 6:00 pm- 7:00 pm

The web link and the phone number to join the WebEx is listed below:
Please click this URL to join: <https://zoom.us/j/799429910>
or join by phone:

Dial (for higher quality, dial a number based on your current location):
US: +1.669.900.6833 or + 1.929.205.6099 or 877.853.5247 (Toll Free)
or 888.788.0099 (Toll Free)
Webinar ID: 799 429 910

Computer Training Lab

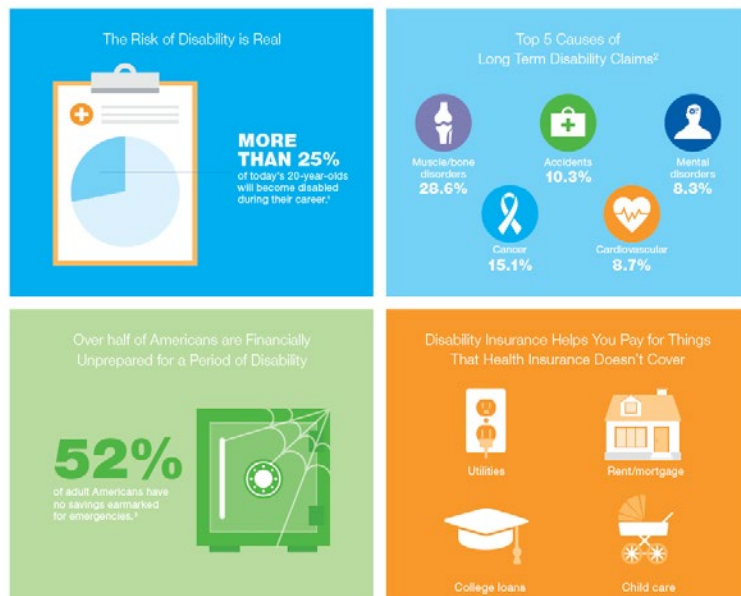
Finally, Human Resources will be available during the following time in the NCHC Computer Training Lab to assist with the on-line enrollment through The Standard Ready Enroll portal.

Date	Time
Friday, June 7, 2019	2:00-4:00 pm
Monday, June 10, 2019	8:00-10:00 am
Tuesday, June 11, 2019.....	12:00-4:00 pm

Please note: If you currently are not enrolled in any of NCHC's Voluntary Benefits, however you are benefit eligible (0.5 FTE or greater), the information on this page still applies to you. Please read this entire notice. A letter will be sent to your home as well outlining the steps you need to take.



Why You Need Disability Insurance



¹ U.S. Social Security Administration, Facts. <https://www.ssa.gov/disabilityfacts/facts.html>. Accessed June 2, 2017.

² Council for Disability Awareness, 2014 Long Term Disability Claims Review.

³ U.S. Federal Reserve Board, Report on the Economic Well-Being of U.S. Households in 2016, May 2017.

The Standard is a marketing name for StanCorp Financial Group, Inc. and subsidiaries. Insurance products are offered by Standard Insurance Company of Portland, Oregon, in all states except New York. Product features and availability vary by state and are solely the responsibility of Standard Insurance Company.



WHAT'S 4 LUNCH?

WAUSAU CAMPUS CAFETERIA

Cafeteria Hours: Open 7am – 5:30 pm

A Cashier is on duty from 9:00am – 10:00am, 10:30am – 1:30pm.

When a cashier is off duty, an honor system is used for food purchases.

Serving Soup, Salad and Lunch Entrée Option Monday – Friday.

All hot sandwiches, hot foods and cold bar items are \$.35/ounce.

Soup: \$1.25 Cup | \$2.00 Bowl



JUNE 10 – 14, 2019

MON 6/10Cheesy Chicken Tortilla Soup

Chicken Bacon Ranch Wrap

Pork Chop Suey

Rice

Pineapple

Fortune Cookie

TUES 6/11.....Chili

Burger

Polish Sausage

Mashed Potatoes & Gravy

Sauerkraut

Polish Drumstick

WED 6/12Cream of Broccoli Soup

Pasta Bar

Breaded Chicken Breast

Dressing

Creamy Cole Slaw

Pecan Pie Bar

THUR 6/13Chicken Vegetable Soup

Monterey Ranch Chicken/Petite Kaiser

Roast Beef

Boiled Potatoes

Strawberry Sauce

Pound Cake

FRI 6/14Beef Noodle Soup

Grilled Turkey and Cheddar

Hot Ham Slice

Hollandaise Sauce

Corn

Reese's Peanut Butter Cookie



**Marathon County
Employees Credit Union**

*When We Say
FREE Checking
We Mean **FREE**...*



Stop paying a bank
for the privilege of keeping your money there.
Open your free credit union checking account today.

**Proudly Serving NCHC Employees and Their
Family Members Since June 9, 1965.**

**Already a member: Thank you!
Not a member: Contact us today!**

www.mcecu.org • 715 261-7680
cuteller@co.marathon.wi.us
400 East Thomas Street Wausau, WI 54403

**SUMMER FOOD
SUMMER FUN!**

Healthy meals for kids and teens. **FREE!**

No need to sign up or apply—just show up and enjoy!

Location and Time(s) of Meals:
June 11th – July 18th
(No Meal Service July 4th)
Wausau West High School (Mon – Thur)
Breakfast 7:15 – 8:15 a.m. Lunch 11:00 – 11:30 a.m.

Contact:
Wausau School District
Nutrition Services
715-261-0806

More Info:
wisummerfood.org or call 211
Text: 'food' to 877-877 for meals near you.

This institution is an equal opportunity provider.

Summer Food Service Program
Wisconsin Department of Public Instruction